



Instructions

P.A.C.S DRAWER

Thank you for purchasing your P.A.C.S. Drawer from AAL! We greatly appreciate your trust in our company. We take that purchase and your commitment to us very seriously. If you have any questions along the way, please don't hesitate to give us a call at 385.202.4188.

****Please read these instructions thoroughly before starting this project.****



NOTE: The Drawer itself comes pre-assembled! This manual instructs how to install the completed assembly into the vehicle

Tools Required:

There is more than one tool for every job, but below is the list of tools we use for this installation.

Tools listed are for assembly only, as disassembly tools will vary.

- 5mm Allen Wrench/Socker

Hardware included:

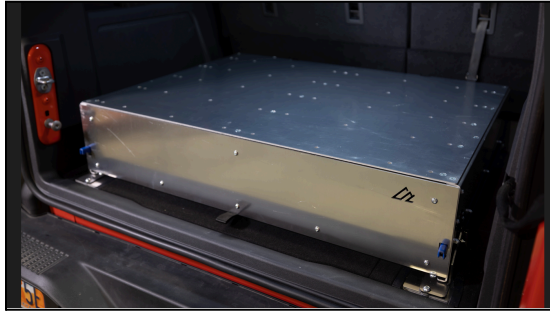
M8x50mm Button Head Bolts	8	M8 Nylon Lock Nut	2
M8x25mm Button Head Bolts	2	M8 Nylon Flat Washer	2

Part Overview and Prep

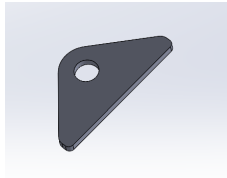
First lets review images of all the necessary parts and hardware to ensure we have everything we need for the installation process



PACS Drawer Parts:



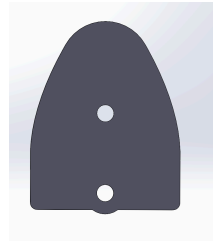
Top Spacer (4):



Bottom Spacer (4):



Cover Spacer (12):



Hardware:

M8x50mm Button Head Bolts 8



M8x25mm Button Head Bolts 2



M8 Nylon Lock Nut 2

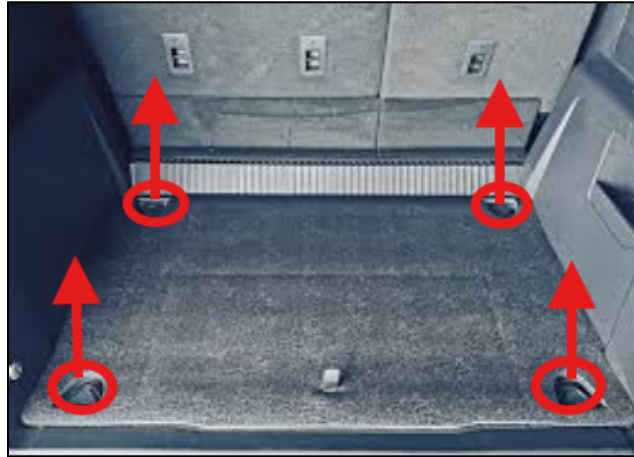


M8 Nylon Flat Washer 2



Step 1 - Clear the Trunk Bed

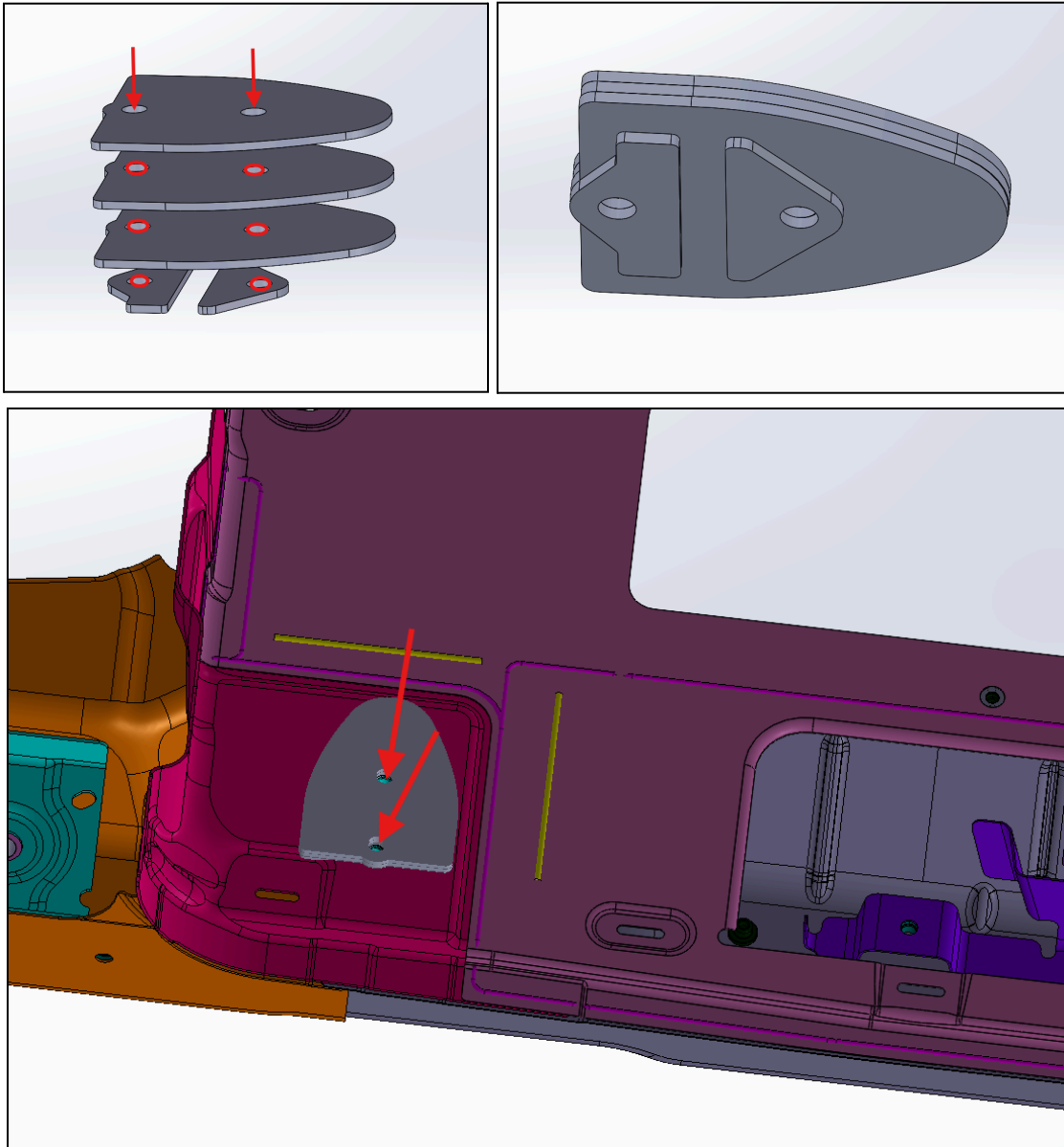
All that needs to be done before installing the pacs drawer is to clear the trunk of any objects, and remove the factory bolts in each of the four corners



Once this is done, you're ready to go!

Step 2 - Align the spacers

Once the bed is clear and the four bolting locations are apparent, set aside 3 Spacer Covers and one top and bottom spacer for each of the four corners. Align the components like so



Once aligned, carefully place the side rails on top of the two holes and bolt into place using (2) M8x50mm Button Head Bolts per corner. Once done, the corners should appear as follows. Ensure that the end of the rail with a large hole on the side is in the side of the trunk closest to the front of the vehicle

NOTE: The image depicts this step with the drawer in place already. This is unnecessary. Fasten the rails by themselves without the drawer in the trunkbed for an easier installation.



The final step is to attach the pivot bolts which attach the drawer to the rails. To do so, slide the drawer into the trunk and tilt up the front as shown in the previous images. Then using (1) M8x25mm Button Head Bolt, M8 washer, and M8 locknut on each side, fasten the bolts through the flange under the drawer with the nut and washer on the outside of the rail. The bolt location is shown below



Share Your Photos!

We take great pride in building our products and we hope that pride extends to you after installing your P.A.C.S. Drawer. If you are able to share your photos online (Facebook and Instagram), please tag **@AmericanAdventureLab**. We would love to see how it turned out and give you some reciprocal attention in return!

Congrats! You're all done!

Thank you!

At American Adventure Lab, we strive to improve anywhere we can. If you experience any issues with this product or have any suggestions, please let us know.

If you have any questions or concerns, please don't hesitate to reach out to us at 385.202.4188 or via email at Support@erp.adventurelab.com.

